

UNIT4

In business for people.

PTF documentation FIS2000


PTF003 for release 2016.01

Table of contents

TABLE OF CONTENTS	2
INTRODUCTION	3
TECHNICAL ENHANCEMENTS	4
PTF003	4
PTF002	4
PTF001	4
RELEASE	5
FUNCTIONAL ENHANCEMENTS	6
PTF003	6
PTF002	7
PTF001	9
RELEASE	11
SEPA	16
PTF003	16
PTF002	16
CONNECTING WITH OTHER APPLICATIONS	17
SOLVED ERROR MESSAGES	18
PTF003	18
PTF002	20
PTF001	22
RELEASE	25
SUPPORT	29


Introduction

This document can be regarded as a guide for e.g. the application manager when implementing this release/PTF within the organisation.

 *If you plan to install the base release 2016.01 together with this PTF, you need to read the documentation and loading instructions for the release first! The details of the base release are not included in this PTF-document.*

Please be aware of the following conditions and effects:

- This PTF should only be installed when the FIS2000 base release 2016.01 is already present on the server
- All payment and collection proposals, as well as draft-, cheque- and TAX-proposals must be completed (including Pay Definitely / Definitely Collect) before installing this PTF
- If, at present, you are using a release older than 2010.01, you need to install release 2010.01 first, upgrade your database(s) and then switch to release 2016.01
- As from release 2016.01 you need to work with Basepack/Valuepack **7.6** for Easy @ccess
- Always install the Easy @ccess panels provided with the most recent software, both the general (in '/Panels/Shared Files') and specific panels (in '/Panels/FIS2000'). The online help text is loaded automatically.
- Users of the Online Approval module need to install the version provided with this release, version 2016.01.03, as well as the most recent Webviewer, available on the Portal.
- After installing this new release/PTF, you must run the 'Modify file library for new release/PTF' procedure for every FIS2000 data library on your system. During this process, the posting files will NOT be converted.

 *We strongly recommend testing new software in a separate environment, especially if you use custom built software or third party applications connected with FIS2000.*

Technical enhancements

PTF003

File changes in the database

In PTF003 the following data files in the FIS2000 data library will be altered:

DCSPGP	Settlement groups
DCSPGD	Settlement groups Db/Cr numbers
DCSPVK	Settlement proposal header
DCSPVG	Settlement proposal groups
DCSPVF	Settlement proposal invoices
DCSPVR	Settlement proposal settled invoices
DCSPVB	Settlements postings
FAI1V	Current Account Table sending
FAI2O	Current Account Table receiving
DCAK	Approval routes master data

PTF002

File changes in the database

In PTF002 the following data files in the FIS2000 data library will be altered:

DCAPBS	Payment scheme master data
DCALBS1	Payment scheme master data
FAM21	Financial transactions
FAMW180	Work file postings
FASJ1	Daybook - master data
DCVPGB	User master data
FKTPFK	Invoice data Kofax
FKTPFS	Invoice data Kofax save
DCPPTM	Transaction data - Transactions
DCPPDM	Db/Cr transaction data – Transactions
DCRPBM	Tick off data transactions
DCAPLF	Log file for invoice changes
DCAPLA	Log data approval routes

PTF001

File changes in the database

In PTF001 the following data files in the FIS2000 data library will be altered:

FASAO	Database Master data
FAGPBI	Batch information

FAGLB12	Batch information (New)
FAGPGL	User-ID's (financial transactions) log file (New)
DCVPGB	User master data
FAGPAU	Authorisation master data per chart of accounts
DCIA	Db/Cr company master data
DCAPLW	Log file on invoices for Data Warehouse (New)
DCALLW01	Log file on invoices for Data Warehouse (New)

Release

File changes in the database

In the base release the following data files in the FIS2000 data library will be altered:

FASJ1	Daybook - master data
FASR1	Accounts - master data
FAST1	Percentage calculations – master data
FASRT	Percentage calculations, continuations - master data
FAM20	Financial transactions – daybook data
FAGPEB	Postings in an electronic VAT proposal (New)

Upgrade Lega Suite software

The Easy @ccess panels for release 2016.01 and its PTF's have been built in a new development environment, LegaSuite **7.6**. In order to run release 2016.01 successfully you need to install new Easy @ccess software, the so-called Basepack.

Please refer to the 2016.01 release documentation on this subject.

Easy@ccess panels distributed in two separate files

As from this release the Easy@ccess panels have been split into two parts, a general section (in '/Panels/Shared Files') and a specific FIS2000-section (in '/Panels/FIS2000').

The general panels are also used in other Unit4 applications and this separation allows us to distribute modification more easily.

Functional enhancements

PTF003

Settle invoices

Before starting the function for automatic payment or automatic collection of invoices there is now a function for settling invoices.

A settlement leads to a plus and minus posting resulting in a change of the invoice balance which is the basis for the automatic payment and collection process.

Settlement is possible on the level of company and Db/Cr numbers.

You start by defining groups containing company and Db/Cr numbers which are the basis for selecting invoices in a settlement proposal.

In this proposal the actual settlements takes place. After entering the settlements, transactions can be generated and processed.

Using the option Db/Cr screen information the settlement information remains available so the actual settlement can be reviewed.

In the same function a settlement can be corrected through generating a plus and minus transaction which can be processed just like the one that generated the error.

The options for generating transactions and corrections can be disabled using the function authorization of FIS2000.

Export to iVAT

PTF003 contains a new export option, meant for the iVAT-application of Avalara. The iVAT-export from FIS2000 consists of a fixed set of financial data, exported to an IFS-location of choice.

The iVAT software allows you to compose a VAT declaration in almost all countries in the EU and beyond. Please note that local VAT regulations may require additional data. This information may be added through interfaces during export (as part of FIS2000) or after export, in the iVAT application itself.

The iVAT software is not part of FIS2000; it is available from Avalara.

Flaggings on 'Control report financial transactions'

The 'Control report financial transactions' contains errors and flaggings. In some cases, flaggings have no added value and as from PTF003 you can 'switch off' specific flaggings. These settings needed are part of the daybook master data.

Refer to menu option 'Maintain day books' to suppress specific flaggings.

Copy a User Identification

The menu option 'Work with User ID's financial transactions' now offers the possibility to copy a user identification. Right-click on the original ID now offers the option to copy the ID. The new ID name must not exist or should at least be empty.

The 'copy option' can be made (un)available through authorisation.

Delete a User Identification after processing

As standard a User Identification is cleared after processing. In this PTF an option is added to delete the Identification after processing. This option may be handy when the processing of financial transactions is started by an external application.

The new option is available on the screen for 'Process financial transactions' and in interface FAG150CL (full details in the Interface manual)

Additional limitations in approval routes

In 'Maintenance approval routes' you could already enter a 'from amount'- if used, invoices less than this amount would not be offered to the selected official.

In PTF003 a 'to amount' option was added. If used, invoices larger than the specific limit are also not presented to the official in question.

Alternative processing of prepayments

In case of a prepayment, an invoice in FIS2000 consists of a payment posting only. As there is no invoice posting (yet) FIS2000 handles this invoice as an invoice without an invoice date. In some menu options for overviews and analysis this affects the quality of the output.

For specific overview and export options on the "Debtors-creditors -2" menu, you can now choose to use the posting date of the prepayment as the invoice date.

PTF002

Overview for VAT-return (Belgium)

When you use 13 posting periods, the selections for this overview (and export file) are made by entering 'Date from' and 'Date to'. In these circumstances, there is the risk of an invoice being entered in FIS2000 belonging to a time interval for which the VAT overview has already been generated.

As from this PTF it is possible to run a 'definitive' overview. All invoices in the overview are marked to ensure that they are selected only once. Also, the software looks for invoices (in the selected posting year!) in previous periods and includes them if they were not selected earlier.

An extra report is generated with all invoices included in the VAT-export.

Menu: Belgian administration, option: Overview for VAT-return

Log modifications in approval routes

All modifications (additions, updates, deletions) in the master data of approval routes are now automatically logged by FIS2000. A new export option has been added to export the log data in CSV-format.

Payment scheme

This PTF introduces an optional payment scheme for creditor invoices. A payment scheme can be used to split payment of one invoice into a flexible number of separate payments, to be executed on different moments in time. Each payment can have its own payment characteristics.

The payment scheme can be entered together with its financial transactions (Type 'Document-oriented' only), or afterwards using the option 'Change invoices'.

When a 'payment proposal' is generated, the invoice balance is matched with the payment scheme. In this process, FIS determines the amount to be paid.

A payment schema can be modified at any moment, as long as the sum of the individual amounts equals the invoice amount.

Add master data from 'List (F4)' functions

This PTF introduces the possibility to directly add master data from a list function. For example, when you need to enter a country code in FIS2000 and this code does not yet exist, you need to abort your action and add the country code elsewhere.

As from this PTF you can start 'Maintain country codes' directly from 'List country codes'. Obviously, this only works if you have authorisation to do so.

This shortcut is available for country codes, cost centers, cost units, accounts, statistics 1/2/3 and layout numbers.

Search invoice through payments characteristic

In several FIS functions, you can search invoices by Payment characteristic. FIS searches for invoices using the search characters and retrieves invoices that **start with** matching characters. PTF002 introduces the possibility to **scan the entire** payment characteristic.

You can store your personal search method using the 'Store' key.

PTF001

Print posting proposals

In PTF001 a general printing function for posting proposals has been added. The print option was already available, but the new software allows the printing of a range of proposals.

Menu: Print master data, Option: Print posting proposals

Export from 'Screen information postings'

For technical reasons, no more than 9,999 postings can be exported from 'Screen information Postings'. When this limit is reached, a message is displayed to warn the user that not all postings can be shown or exported.

Select on amount in 'Screen information postings'

On the screen 'Screen information posting (Descending)' the button 'Additional selections' was added. With this button a window is presented on which you can enter a selection on posting using the postings amount.

When an additional selection is active, the button is displayed as 'Additional selections (**)'.

Authorisation on Tick Off sets

In PTF001 the possibility was added to apply authorisations on tick off sets. In "Maintain Authorisations Fields" you can now enter authorisation details for tick off sets.

Menu: Frequent, Option: Tick-off accounts

Export Outstanding commitment items

In 'Outstanding commitment items' you can now choose for (additional) export in CSV format.

Free texts in a Remittance Advise

The file definitions for a remittance advise contain an element for free texts, which can be used as of this PTF. In "Pay definitely" this text can be entered. This option is available for both EDI-formats: D93A and D01B.

Logging the removal of User identifications

In PTF001 logging was introduced on the removal of User identifications for financial transactions. The processing of a User identification was logged already.

The logging is always 'on'; it cannot be switched 'off'. In both cases the log information can be viewed through the 'User info' button.

Online Approval: Limit the number of invoices displayed

In Online Approval an individual user can now enter a maximum number of invoices to be displayed. You can also choose to enter a general limit for all users. This option can be used in case of performance issues caused by a (very) large number of historic invoices.

Plus: the general settings of Online Approval have been re-arranged using tab functions.

Online Approval: Download screens.

In Online Approval you can now download the most common used screens to a CSV or PDF file.

Block double use of invoice numbers

In menu option 'List file data' there is a new setting in 'Flagging financial transactions'. FIS can already signal the use of the same invoice number with different debtors/creditors, but you can now handle this situation as an error. If so, you cannot use the same invoice number for different debtors/creditors.

Timestamp in export files for reminders and account overviews

When creating account overviews and reminder, you can (also) choose for export in XML format. In this case the user must provide the name of the export file and its location in the IFS. If a file with this name already exists in the specified location, the existing file is overwritten by the new file.

To prevent this from happening, you can now choose to include date and time in the name of the export file. The file name then consists of: free_text.CCYMMDD.HHMMSS.xml
For example: ACCOUNT_OVERVIEW.20170112.143325.xml

Alternative processing for Db/Cr current account overviews

In menu option "FISDCA1, Maintain general data / General - Summary company data" there is an option to choose for an alternative way of processing current account overviews.

When you select this 'second method' you do not need to close posting periods. A current account overview then consists of all invoice transactions in a certain period, plus an opening and closing balance. In this case, no additional financial transactions are generated and no new invoices created.

Should you consider using this alternative method, please refer to a FIS2000 consultant first!

Fixed setting for Error report layout number

In "Control Report Financial Transactions" a user is able to select different report layout. If you want to use a different setting as default, you can store the layout number in data area FAG139DA.

For more information: refer to the manual Technical specifications

Log & Export modifications in menu options for rolls and users

(Addition to the release) Modifications made in the menu options for a roll or an individual user can be logged in a log file. The application manager is able to switch this logging 'on' or 'off' through the menu option "Maintain operating software".

The output is always in CSV-format, the lay-out of the result file is fixed. On the selection screen, at least one date (from – to) is required. There is a possibility to export all modifications entered by a specific user.

Select 'Key data' to include log data the logging itself being (de)activated. The IFS-path and the name of the export file are always repeated from the latest request.

Menu: 'Menu', Option: Export modifications roles/user menu's

Release

Statistics numbers available as full financial dimension

As from release 2016.01 statistics numbers in FIS2000 have the same functionality as Cost centres and Cost units. This means that a ledger account can now be defined as 'Statistics number tied'.

Statistics numbers are now available in percentage calculations, for the allocation of costs and proceeds.

Statistics numbers are not automatically available in all processes of Db/Cr-control and the functionality in automatic pay and collect. Existing selection and sorting options have not been extended.



Note: the use of Statistics numbers requires a separate module

Search in descriptions of postings

After selection of a ledger account (combined with another dimension or not) the screen for 'Screen Information Postings – Transactions' offers new search options.

First, there is the possibility to enter a search argument on the posting descriptions. If used, all postings containing the search string are selected and displayed.

Selection on 'tick off set' is also possible. When a posting is included in a 'tick off set', you can easily retrieve all postings belonging to this group.

Finally, introduced in release 2015.01, this screen allows different layouts. In the option "Maintenance variable layouts screens" you can define multiple customized layouts by selecting the information you want from all columns available.

Retrieve (and Clean up) inactive Debtors / Creditors

Release 2016 contains new functionality to retrieve relations (Debtors and Creditors) that have been inactive for a specific duration of time. In FIS2000 terms that means: no invoices have been entered during a variable amount of time.

A debtor or creditor is selected for this report, if:

- the master data are at least one-year-old,
- no active invoices are present in FIS2000,
- all historic invoices are older than the evaluation date entered by the user

Initially a report is generated containing all relations selected upon the criteria entered. If you want to use this information to remove Db/Cr master data, you can do this manually.

If you want to remove inactive relations, you can also choose to generate an import file. This file (called "DCA240IM") contains 'remove-actions' for the selected relations, which can be imported using the option "Batch-input debtors/creditors/accounts" on the menu Batch import.

Prior to import, you can view all selected relation and, of course, cancel a remove-action.

Removing relations using the import file offers extra functionality. As standard, a Db/Cr relation can be removed manually if:

- there are no active invoices (all 'zero invoices' were moved to history)
- there are no 'zero invoices' for this relation ('Reorganise History' was performed)

When you use the import file the second condition does not apply. So, if all invoices have been moved to history, FIS2000 performs 'Reorganise History' for this relation automatically.



Note: if 'Controlled maintenance of Db/Cr master data' is active, all 'remove-actions' follow this procedure and must be approved

Menu: Debtors/Creditors-3, option: Overview inactive Debtors/Creditors

Variable screen layouts for Work With User Identifications - Detail Information

In 'Work with User Identifications - Detail Information' you can now select your own screen layout. You define your own screen layouts using the option 'Maintenance variable layouts screens'.

Also, the actual day book is always presented on the first line of the information screen.

REMITTANCE ADVICE - version D-01B

In the general bank account master data there is a possibility to generate a Remittance Advice during automatic pay. Up to now, FIS2000 would supply a specification file according to the EDIFACT **D-93A** definitions.

In release 2016.01 a second definition has been added; in the bank account master data and during 'Pay definitely' you can also choose for the more modern **D-01B** format.

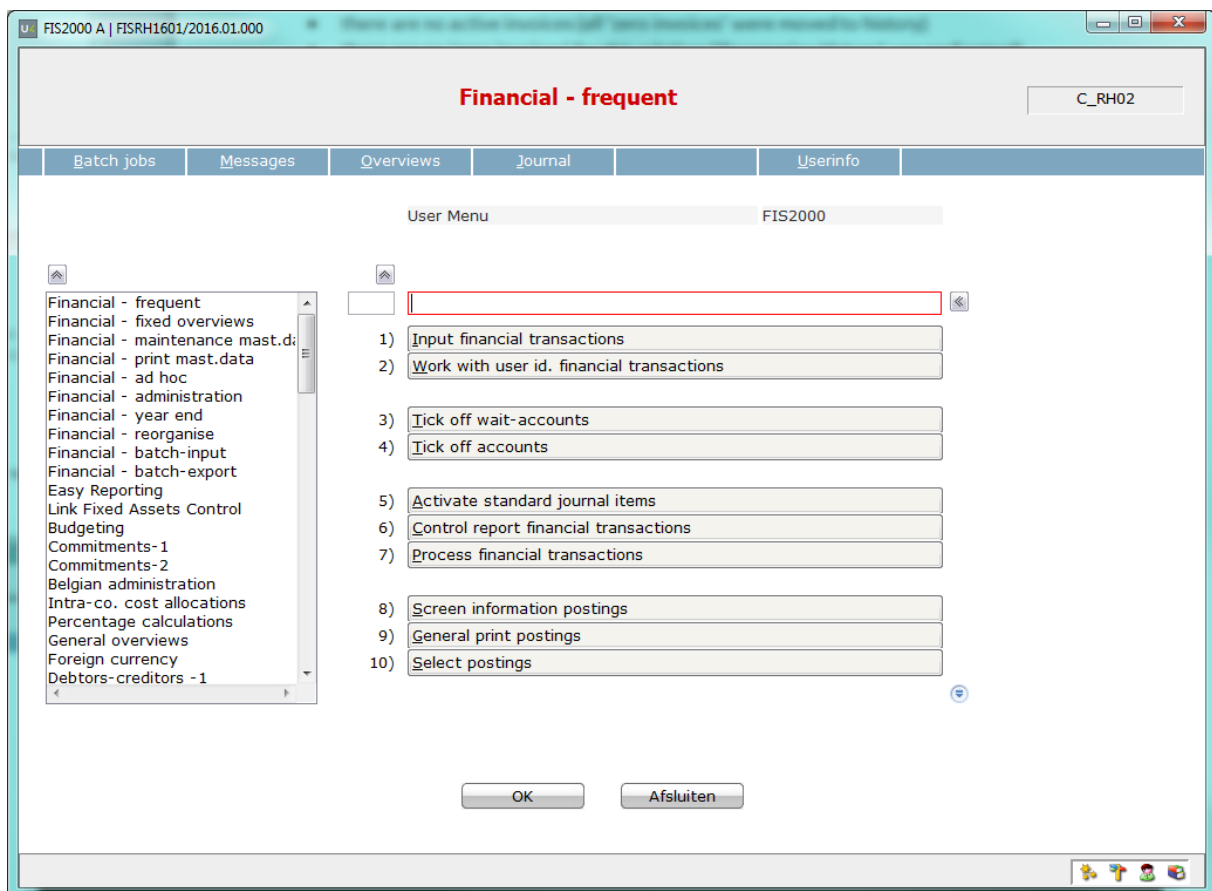
Intercept postings (interface FAG183IN)

While processing postings in FIS2000 you can intercept the data for your own business information system. This interface is started only if the program and the library can be found in the actual library list.

If you want to be sure that this interface is always activated for all your postings, you can arrange this through the menu option “List file data” on the FIS2000 menu. If you do so, the system will also provide calling this program out of the correct library you have entered at the previous option.

New menu software

Release 2016.01 also introduces a new version of the menu software. The general menu page looks like the screen below:



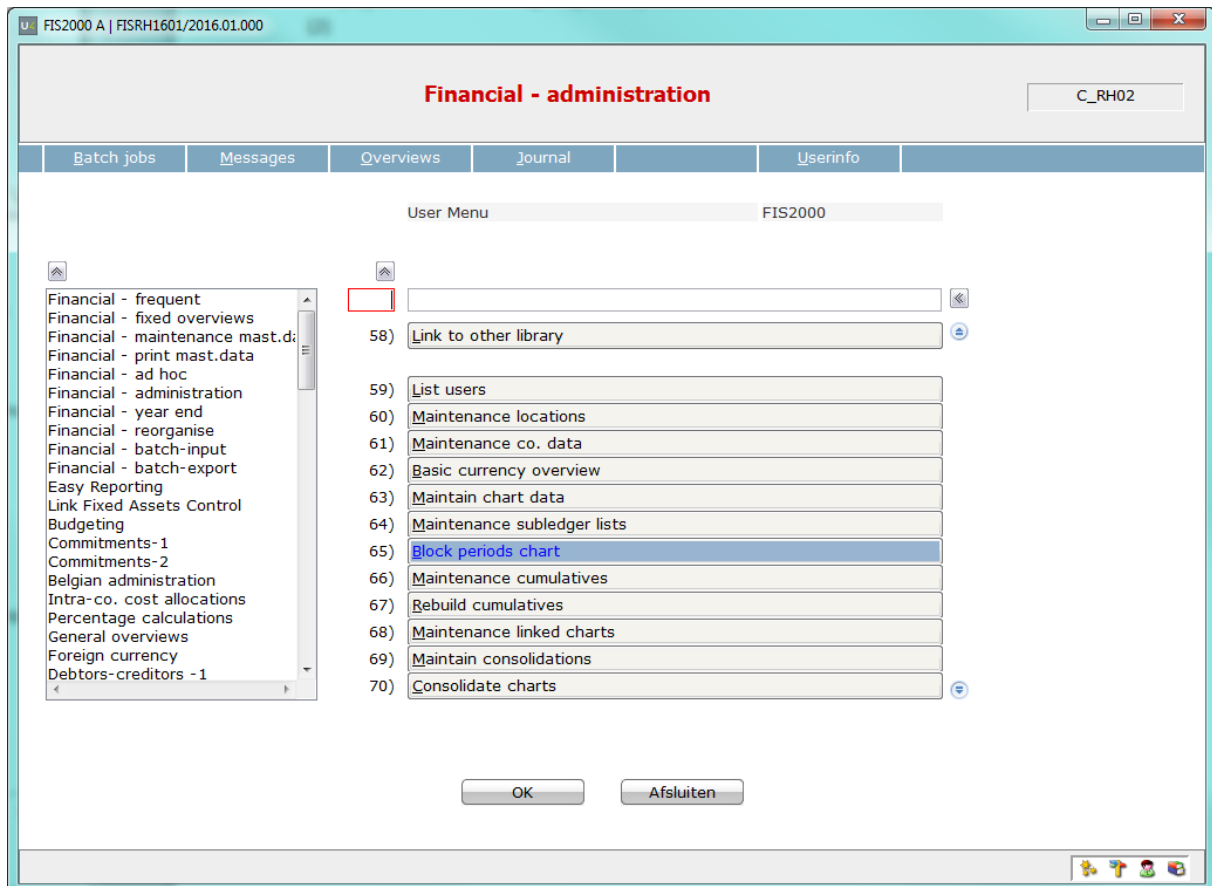
This new software contains several new possibilities, like:

- (1) The search menu on the left now contains the full menu name, in the same order as the menu pages themselves – no longer in alphabetical order.
- (2) The menu screen contains a search field that can be used to search within menu pages and menu options.

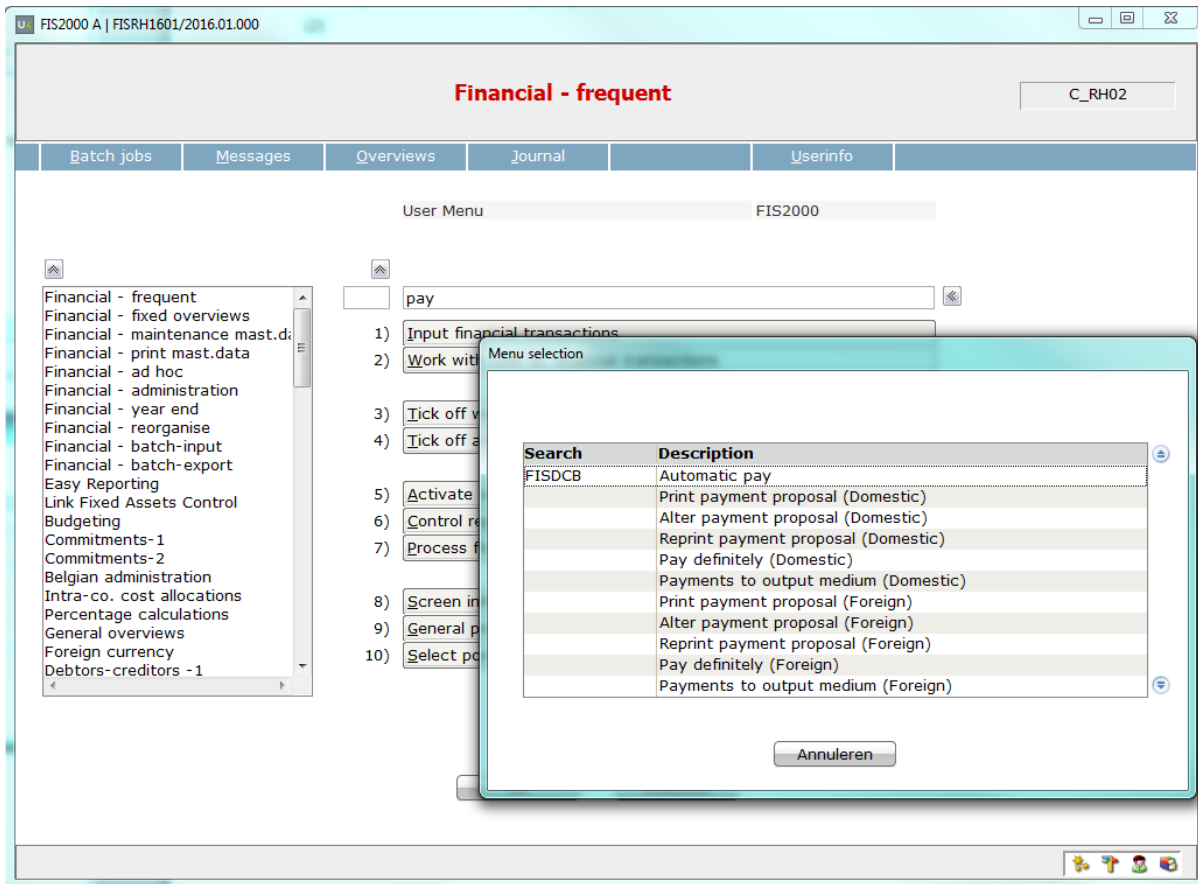
For example:



When the search has exactly one result, the corresponding menu page is displayed:

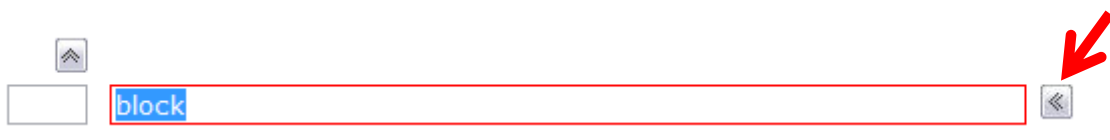


If the search action results in multiple results, a window is presented with all results (menu options or pages):



Select one of the results, and this option is started instantly.

On the right, the search field has a button for previous search arguments, entered in this session. By clicking this button, you can 'roll back' through your search words.



SEPA

- This chapter contains all additions and changes regarding SEPA, for the 2016.01 base release.

PTF003

SEPA payments in 001.001.03 format available for all countries

Several banks outside the EURO zone are able to process payment files in SEPA (PAIN 001.001.03) format. Country restrictions in FIS2000 have been removed, making SEPA-format available for all country codes.

PTF002

HSBC interface for SEPA payments in 001.001.03 format

HSBC Bank requires additional data for the processing of SEPA payments (001.001.03 format). In FIS2000 you need to specify 'currency bank' SEPA, and 'variant' 33. After this selection, you need to enter the so-called 'sender identification' that HSBC requires.

Interfaces DCRECONIF, DCRECONIN and DCRECONIZ

For interfaces DCRECONIF, DCRECONIN and DCRECOMIZ an additional (second) data parameter has been added. This parameter contains the specification fields used in a CAMT.053 file in full length: 8 fields of 140 positions.

The existing data parameter still contains specifications, but only the first 65 positions per field. The lay out of the first parameter has not changed.

Connecting with other applications

All changes described so far, may affect connections with other applications on your IBM Power System. All existing interfaces are supported; in most cases, new fields have been added at the end of parameter strings.

Additional information and more technical details are available in the handbook Interfaces in the Online Help text.



- FIS2000 release 2016.01 can also be connected to other Unit4 Business Software applications. Together with FIS2000 a 2016.01 release for all Unit4 Business Software applications has become available. If you upgrade one of these applications to the 2016.01 level, you need to install the 2016.01 release of all other products as well.

If you have any questions regarding connections with FIS2000, please contact Unit4 Business Software to get up-to-date information; go to <https://my.unit4.com>

Solved error messages

In the list below you can find all messages that have been solved for the corresponding release. A number is assigned to each of these messages, which are sorted in an ascending order, i.e. the message with the lowest number can be found at the top of the list.

PTF003

Menu option	Number	Description
Export to iVat	050673	Export to iVat
Overview for VAT-return	050674	In case of date selections in separate book years, invoices could be exported twice
Maintain day books	054330	Disabling flagging's on the control report of financial transactions. The settings are included in the master data of a daybook
Automatic payments	055274	Changes in the REMADV format
Tick off in reconciliation	055585	Printed notification of payments received from a bank account number which is not known in the master data of the debtor or creditor
Work with User Id. Financial Transactions	055763	New copy function for User ID's
Importing master data for financial accounts	055914	Changing a record in this data file resulted in an error for the new statistic tied fields. This situation is resolved, so existing interfaces don't have to be changed
Process financial transactions	055939	User identifications can be deleted after processing (optional)
Menu FISVRF	055957	New menu for the Settlement of invoices (see functional enhancements)
Automatic payment	056256	Error resolved for invoices without a payment date
Maintain Chart Data	056422	Entering a new chart could result in an error
Process financial transactions	056921	The number of postings generated on the financial account for debtors and creditors is limited for in some situations to many postings were generated.
Reminders	056933	Date/Time addition to file names not allowed for files in QDLS

Menu option	Number	Description
ICT statement	056998	The period of the ICT statement is updated in both derived and source charts
Process financial transactions	057139	System value for date format *MDY resulted in an error
Automatic payment/collection	057195	Presentation of large amounts has been approved
Onbase connection	057243	New possibilities to add electronic documents to Db/Cr dossiers of Db/Cr-Invoice dossiers
Approval routes	057279	Optional 'upper limit' for each route step, allowing you to bypass officials
Show images	057329	The URL did not contain the correct hostname/domain name in OS V7R3M0
Link to other library	057401	FIS database level is now shown on the selection screen
Overviews on menu FISDCA2	057475	"On account payments" can now be handled by using the posting date as the invoice date
List file data	057862	In 'Electronic documents (incoming)' you can select the browser that is to be used by the Webviewer (Explorer/Edge/Chrome/local default)
Pay definitely	057931	The informational message "not all printed items will be payed/collected" was shown erroneously in specific circumstances
Automatic pay	057975	Payments in SEPA format are also available for countries outside the EURO zone
Produce letters	058236	License check was removed because it could end in error
Change invoices	058265	Revised handling of 'Payment en route' and 'Invoice blocking code'.
Maintain account master data	058325	When using 'Verified maintenance DB/CR' an error could occur during the update of a subledger account
Tick off accounts	058366	Authorization check on accounts could render an incorrect result
List (F4 key)	058375	The List function (F4), combined with the maintenance option, could end in error

PTF002

Menu option	Number	Description
Overview for VAT-return	050674	New option to run the overview definitively (Belgian charts of accounts)
Approve	050675	Log modifications of approval routes master data
Reminders & Account overviews	051241	Country name, Telephone and Fax number, URL, email address and VAT number were added in the XML export
Automatic pay	052778	Under circumstances an invoice would be printed twice on the overview
Debtors/Creditors	052780	Implement a payment scheme (Creditors)
Definite pay (Foreign)	052929	New items included on the report for 'Definite foreign payments'
Outstanding items to folder	052934	Item 'Last payment date' available for export
Definite pay/collect	053448	An extra warning is shown when the maximum amounts in the master data are exceeded
Base	053751	New possibility to start master data maintenance, directly from a 'list' function
Authorisations	053904	The 'list' function was dropped from authorizations on Tick off sets
Online Approval	053916	Sending e-mails to a substitute did not work in all cases
Select postings	054060	Items 'folder' and 'folder name' were shown on the screen by accident
Prepare document in folder	054159	The IFS-path last used is now shown as default
Online Approval	054256	A default value is now entered in 'Description 2' when coding in Online Approval
Financial transactions	054330	(internal / ongoing)
Maintain Db/Cr master data	054367	Extra filters were included to prevent invalid characters in the master data
Control report financial transactions	054478	Minor changes made on the checks on Cost centre and Cost units

Menu option	Number	Description
Overview for VAT-return	054505	In some cases, an error message was shown erroneously
Search invoices	054581	New 'scan' option to search through the payment characteristics of invoices
Maintain authorisations	054655	Authorizations for locations were not always stores in the database correctly
Export	054663	The value 'PCLLOTUS' is no longer used as a default value for export
Change invoices	055068	Changing invoice data will be changed automatically in all related administrations.
Definite pay (SEPA)	055140	Minor changes in the SEPA 001.001.02 format
Reorganise History	055183	Additional initializations for existing Request definitions
Definite pay /Remittance Advise	055274	Minor changes were made to the D01B REMADV file
Invoice handling	055338	During synchronization between source and derived charts, the due date of an invoice could be lost
Interfaces	055444	In an interface call to DCA400BT/DCA440BT, the subledger data (FAEPD2 parameter) was not always filled correctly
FIS2000	055544	Introduction of INQ module
Interface updating accountinformation	055914	Using former interfaces could result in an error on the "statistic. tied" fields.

PTF001

Menu option	Number	Description
FIS2000 Base	38610	Print option for (a range of) posting proposals
Change invoices	42159	The amount ' <i>en route</i> ' is now displayed on screen and get be cleared with a specific button
Screen information postings	45594	A warning is displayed if more than 9,999 lines are present
Tick Off Accounts	45598	Two extra lines were added on the detail screen
Tick Off Accounts	45599	Authorisation on 'Tick off sets' is now available
Outstanding commitment items	46693	The outstanding items for commitments can now also be exported in CSV-format
Screen information postings	48964	After selection of an account, new search options on amount are available
Pay definitely	49346	The free text fields in the REMADV header (FTX-elements) can now be used
Create ICP return	49433	Export to the IFS is also available
List file data	49527	Interface FAG180IN can be (de)activated by the application manager
Change invoices	49647	In the detail information on bank account, the BBAN numbers were replaced by IBAN numbers
Work with User identifications financial transactions	49819	The removal of a User identification is now logged automatically. Log data can be viewed with the button 'User information'
Pay definitely	49892	In some cases, only 38 of the 40 positions of a SHA256 HASH were printed
Maintain general data (Db/Cr)	50153	Minor changes were made to the screen handling in "Bank Data Per Bank"
Online Approval	50193	In some cases, the retrieval of master data resulted in an error
Input financial transactions	50354	The retrieval of 'Initial balance' did not always work correctly
Reminders	50451	When 'Dynamically remind' was selected, not always all invoices were selected for printing

Menu option	Number	Description
Belgium	50486	A new printing function was added to create an overview of the most important characteristics per day book
Interfaces	50656	In some cases, interface FCALDC(2) could produce an invalid return code
Define users menu	55696	It is now possible to change a menu group into a role and define users in that role.
Online Approval	50820	The number of invoices shown can now be limited; general and individual settings are available. Maintenance functions for general settings were re-arranged
List file data	50821	The flagging for "Invoice number already used" can now also be handled as an error
XML Audit file	50841	The handling of special characters was improved, according to the system settings
Select postings	50982	The processing of postings could halt when master data was no longer present
Administration rejected invoices Online Approval	50997	The handling of extended invoice numbers was not always correct
Reminders & Account overviews in XML	51241	Postal code and country code are now included in the XML export
Kofax interface	51283	When Multi Matching was used for uncompressed financial transactions, the logistic information was not transferred to FIS2000
Control report / Process financial transactions	51329	In data area's FAG139DA/FAG140DA a default definition can be stored for the error report
Document-oriented input invoices	51362	When 'Different company' was used in an invoice line, the validation of the approval master data was performed in the wrong company
Select postings	51413	Selection on posting status can now also be executed with values in lower case
DB/CR current account overviews	51430	When export in XML is selected, the authorisation list of the IFS-location (if present) is duplicated to the export file

Menu option	Number	Description
DB/CR current account overviews	51632	Introduction of an alternative handling of 'Current account overviews; based on invoice postings plus a beginning- and closing balance
Data warehouse	51667	Changes in invoices in FIS2000, in Description, Due date and Payment characteristic are logged and passed on to FIS Data warehouse
XML Audit file	51747	When processing invoice data, the information on the account used was not always accurate
Proposal turnover tax declaration	51764	When using a selection by posting date, no postings were selected
Reminders & Account overviews	51770	When XML export is selected, it is possible to add a timestamp to the file name
Close DB/CR current account	51779	Introduction of interface DCP351IN, available for client applications
Interfaces	51957	Interfaces DCA400IN/DCA440IN were not always executed correctly in case of 'Verified maintenance DB/CR master data'
Automatic pay	52158	For SEPA payments through HSBC-Bank, variant 33 was introduced for the PAIN-001.001.03 format
Interfaces	52284	In interface FVA070 (maintain additional data in Identification ID's) a 'duplicate key' situation occur
Outstanding items wait accounts	52542	In some cases, the overview could contain minimal amounts in national currencies (if posted before switching to Euro's)
Automatic pay	52811	Invoices from an approval route with 'direct pay', were not always selected again if the payment proposal was cancelled
Interfaces	52866	In interface DCALSLD zero-invoices can now be excluded from the selection
Reconciliation	53108	When discount amounts were calculated the sign of the amount was not always correct
Control report financial transactions	53161	Error code 64 was used twice; code 65 was introduced to separate the software checks

Menu option	Number	Description
Process financial transactions	53193	Additional checks to ensure that exactly one currency code is applied in a single invoice
Automatic pay	53262	Not all invoices were included when making payments from multiple bank account, to multiple bank account in combination with Remittance Advise and so-called 'G-rekening'
Bank data per bank	53609	Hash algorithm 1 and 2 could not be selected for domestic payments
Reconciliation	53619	During the change of reconciliation records the account descriptions were not always retrieved
Image / Content Manager	53651	The Db/Cr search function did not work on 'Select Document Index'

Release

Menu option	Number	Description
FIS2000 Base application	44366	Statistics numbers now available as fully functional financial dimensions, including intra company cost allocations
Tick off account	45597	New option to (de)select all lines on the screen
Screen information postings	45799	New possibility to select postings by scanning the posting description
Debtors/Creditors	46056	Generate report & import file on inactive Debtor/Creditor relations
Maintain environments (e.g. for Online Approval)	46417	New search function on user profile of user name
Document oriented input of transactions	46579	When an error was detected in the association checks, the cursor positioning was not always handled right
Interfaces Automatic Pay	46605	Items IBAN account and BIC code are now available in interfaces (stored in work file BNKBETPF) during 'Pay definitely'
Work with User Identifications financial transactions	46692	On the screen 'Detail information' user-defined definitions can now be used

Menu option	Number	Description
Control report financial transactions	46694	The IBAN bank account number can now be selected in user defined definitions of the report
Online Approval	46841	Renumbering invoices in a Belgian chart of account is now also possible from Online Approval
Screen information postings	47062	Using Easy Access not all options (right mouse key) were available in all circumstances
Interfaces (FAGIMPFA)	47065	Interface FAGIMPFA now returns the name of the user identification in which the financial transactions were actually recorded
Maintain appointments	47100	The first page with appointments was not filled completely; because of this not all appointments present were displayed
Work with reconciliation files	47105	Improvements in processing CAMT.053/ABN batch entries; improved performance
Bank data per bank (foreign banks)	47140	The maintenance program did not perform correct if IBAN – and non-IBAN account numbers were used
Copy master data	47167	The contacts defined for a Debtor or Creditor were not included in 'Copy master data'
Copy master data	47198	Under circumstances the search function (F4) could end in error
Maintain Chart Data – Sub ledgers	47249	The master data shown was not always stored in the database completely
Screen information postings	47253	Once on the screen with ascending/descending transactions, you can now select postings on their description or on their 'tick off status'
Print Db/Cr current account overview	47286	The print option now also supports output in XML
VAT registrations	47521	The check on the domain part of an e-mail address was not always performed correctly
Interfaces (Reconciliation)	47544	In the interfaces DCRECONIF, DCRECONIN and DCRECONIZ the full description fields from a CAMT.053 file are now available (8 x 140 characters)
Copy master data	47628	The error handling on the detail screen has been improved, using colours and better cursor positioning

Menu option	Number	Description
Zero invoices to history/ Reorganise history	47632	The performance of these functions was improved significantly by reducing read/write operations and reducing authorisation checks
Process financial transactions	47726	When 'Different company', 'Different period' and 'Different financial year' were used together, the 'current-account' transactions were not always generated correctly
User information	47798	The fourth page of 'User-info' allows a user to view the so-called locks on the FIS200 data library
Maintain invoices to approve	47847	If all route steps were removed for an invoice, the invoice was not handled correctly
Control report financial transactions	48111	The setting "balance contra account zero" is now also available for Belgian charts of accounts
Screen information postings	48118	On the second screen for 'Transaction Data' the VAT items were not always displayed correctly
Interface DCALSLD	48197	On determining the 'Bank reference' for an invoice, the payment postings were included by mistake; this reference is now retrieved from invoice records only
Interface FAGLD2	48295	The internal handling of error situations was improved
Process financial transactions	48393	The current account postings were created with the wrong record identification. When you are using the interface FAG183IN the record ID for current account posting is always set to 62
Call interface FAG183IN	48401	If you want the guarantee that that the interface for intercepting postings is always executed, you can activate this in the option "List file data". The library is inserted automatically into your library list
Select postings	48560	New fields were added for variable layouts of 'Select postings'. The field contain batch information: User, User-ID, Job number and processing date
Maintain field authorization	48596	When the authorization field user id. Is chosen the first screen (Actual/Budget/Commitments) is presented in a wrong format

Menu option	Number	Description
General print postings	48622	The layout number provided by the user, was not checked by the software
Reminders / Account overviews / Db/Cr current account overviews	48957	Export in XML available for all users
XML Audit file	49186	Internal table for country codes was extended
Interfaces	49353	Creating/opening an additional ID for financial transactions using a sequence number of 1 or 2 positions, did not always work properly

Support

- In order to guarantee the continuity of your applications, Unit4 Business Software offers various types of support. What to do if you want to use these services?
- For a problem involving Unit4 Business Software standard applications, you are requested to contact the Service Desk during office hours. Enter your questions at any time through the Unit4 Client Portal (<https://my.unit4.com>). Upon logging on, your data will be made known to us. A concise problem description is sufficient for the Service Desk to tackle the problem (within opening hours).
- For support during the installation and/or implementation of Unit4 Business Software applications you need to make a reservation; please contact our Project Office 14 days in advance.
This type of support can be given at any time (during/after business hours), on location or by phone. For these services fixed tariffs apply.

You can reach the Project Office by phone: **+31 88 247 18 35**

You can also get into contact with the Project Office, should you require additional information on other types of support, such as training and advice.